

Fe de erratas

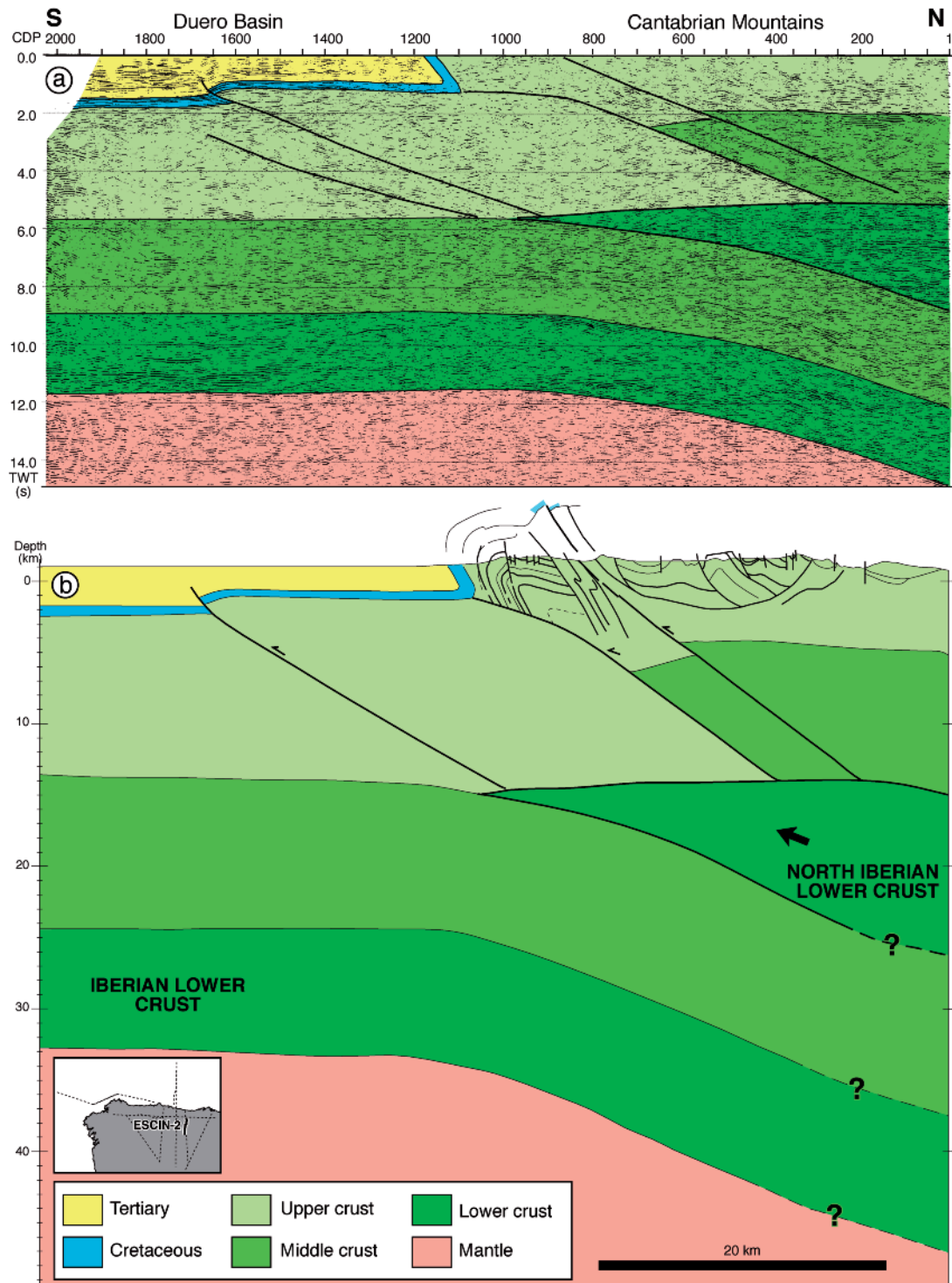


Figura 6. Deep seismic reflection profile ESCIN-2. a) Unmigrated, coherency filtered stack showing the main reflections interpreted in the text (Pulgar et al., 1996). b) Geological model and interpretation of the profile (Gallastegui, 2000).

(Correction to figure 6, page 16, Vol. 25, 2005)